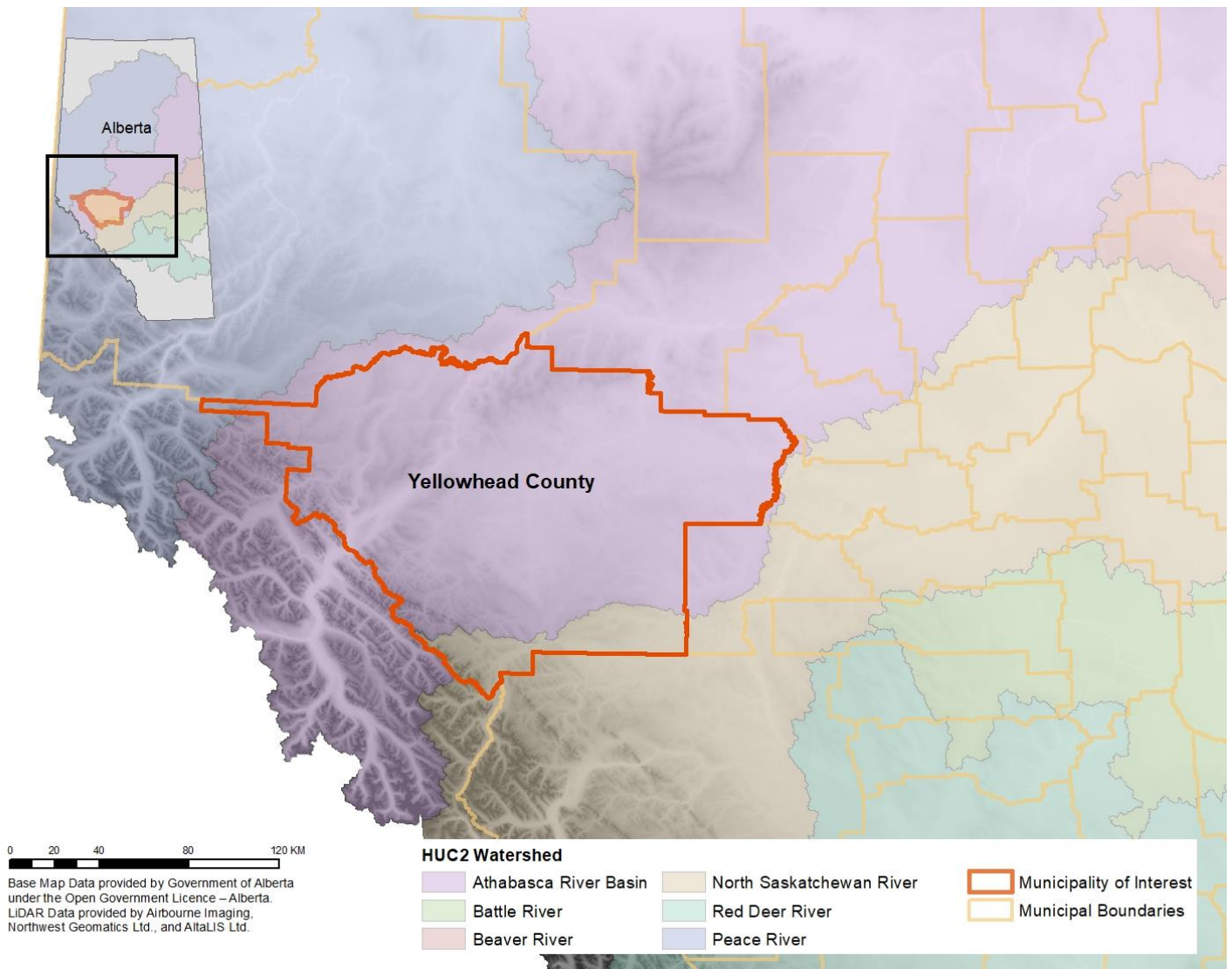
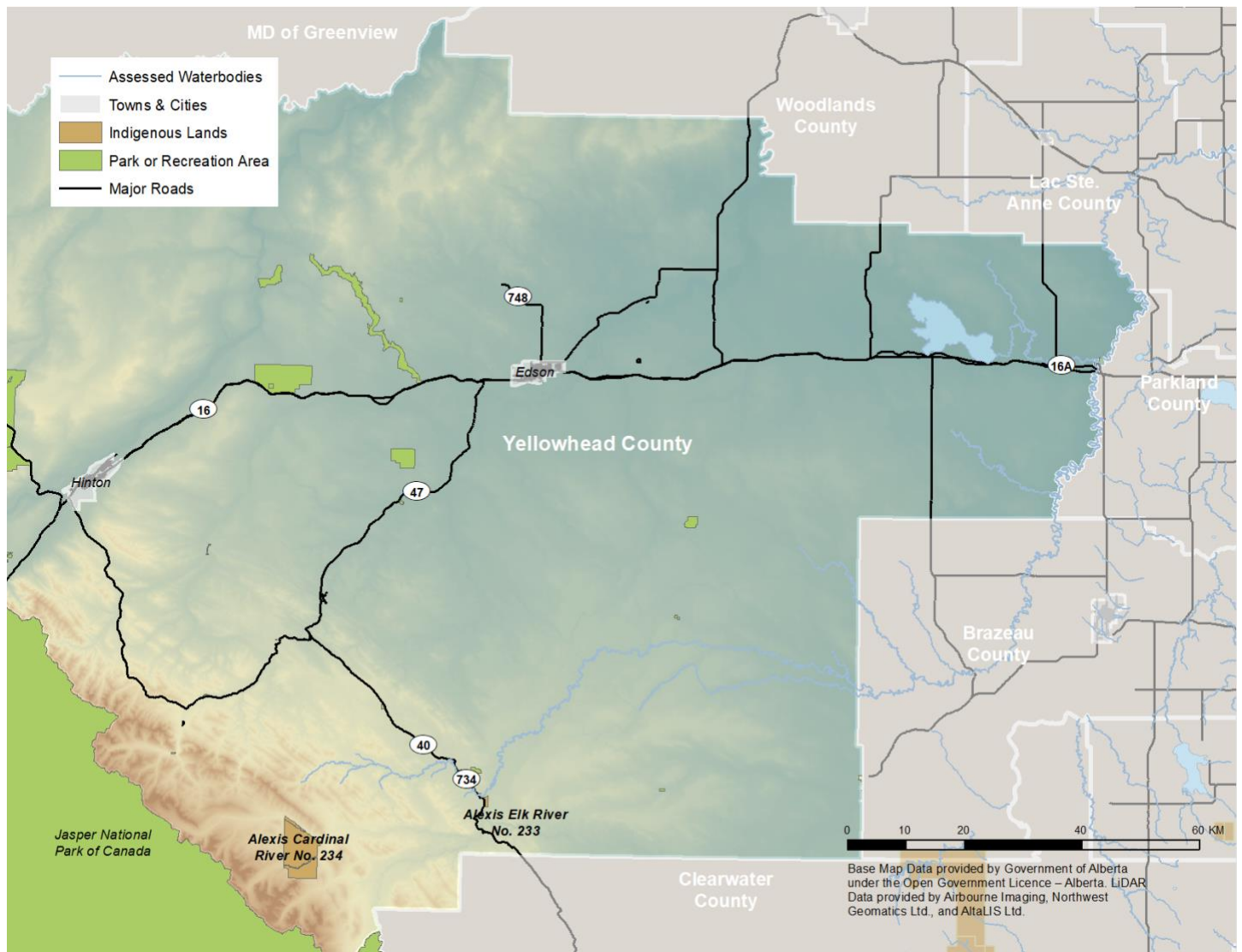




Yellowhead County

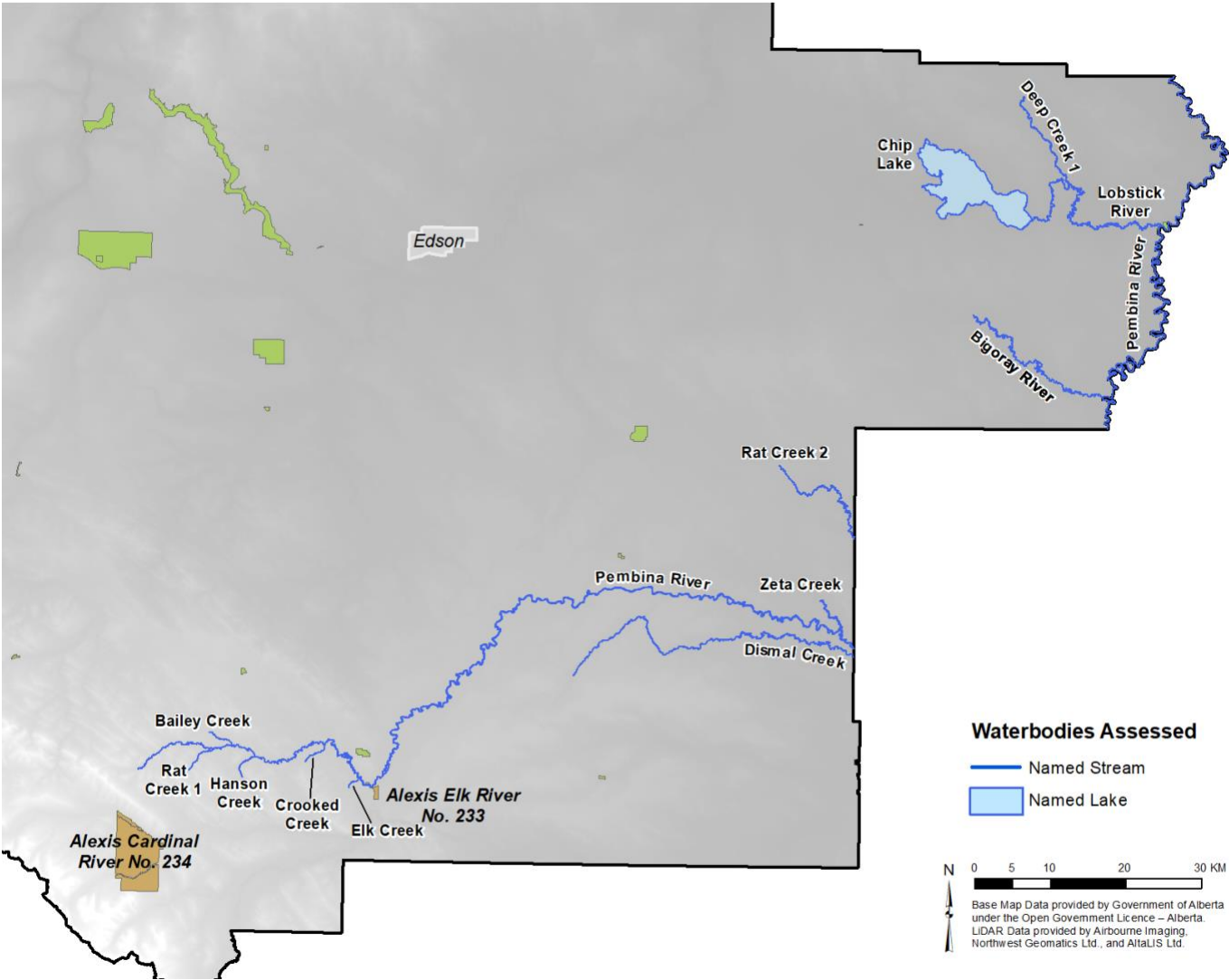


1.1. Municipal Overview

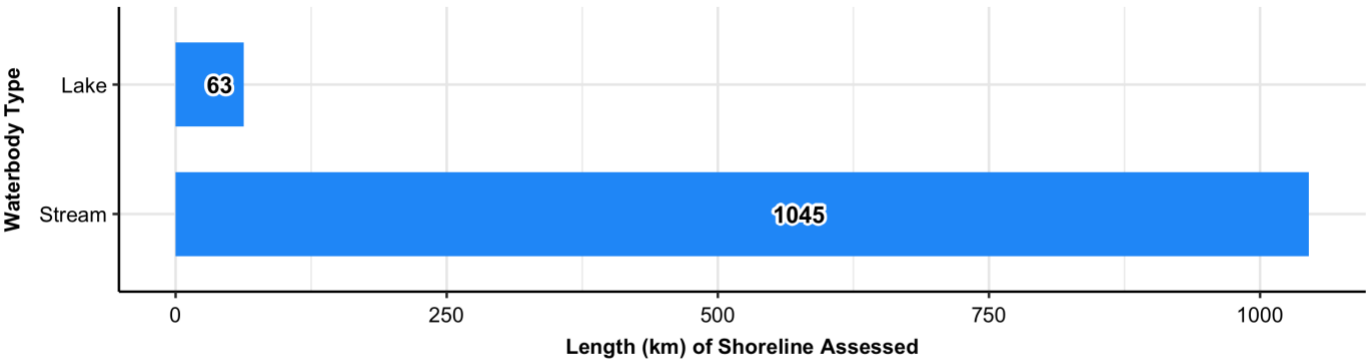


1.2. Shorelines of Interest

Location of Waterbodies Assessed within the Municipality

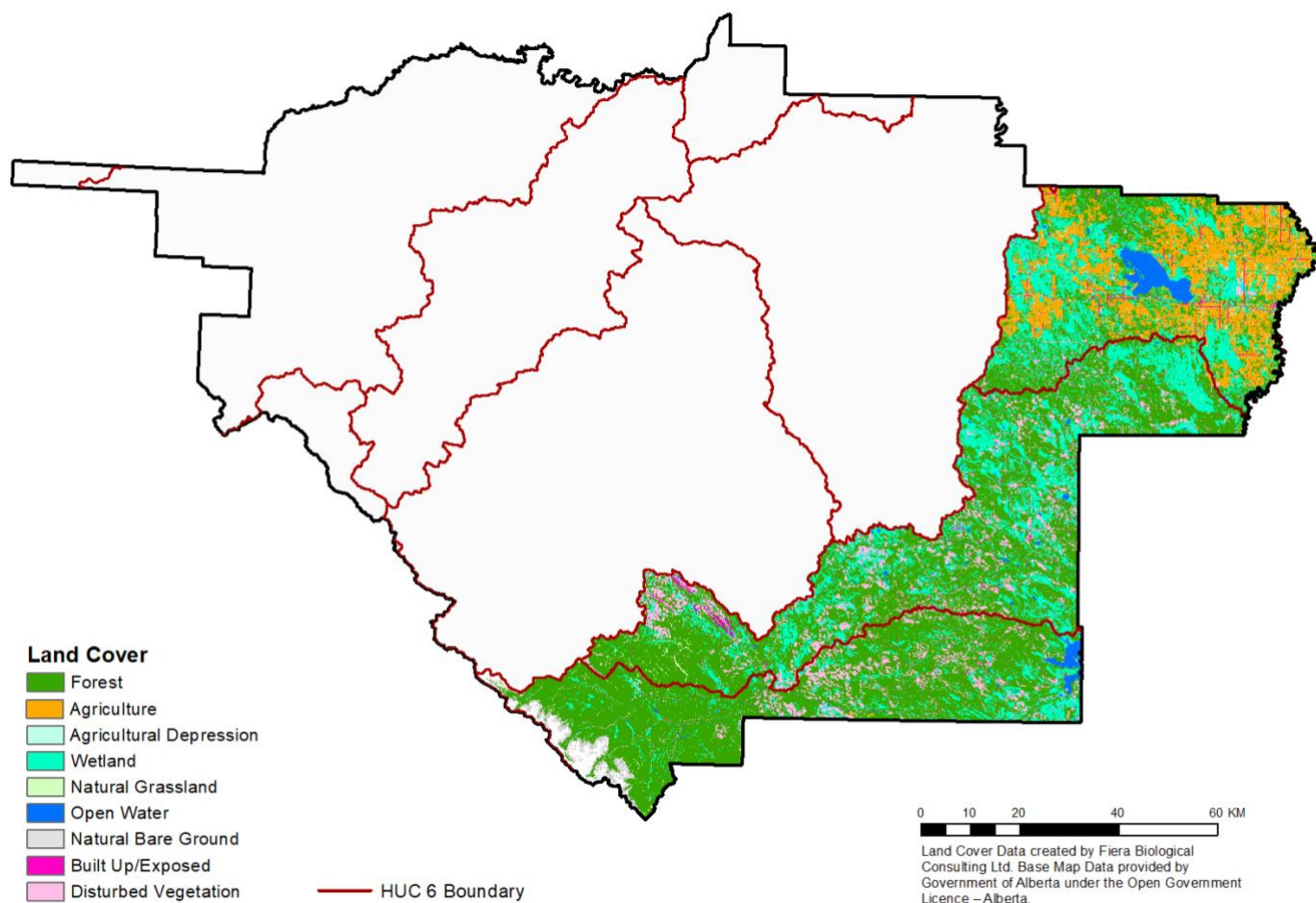


Total Length of Riparian Shoreline Assessed within the Municipality



NOTE: Numbers indicate the total length (km) of shoreline assessed by waterbody type.

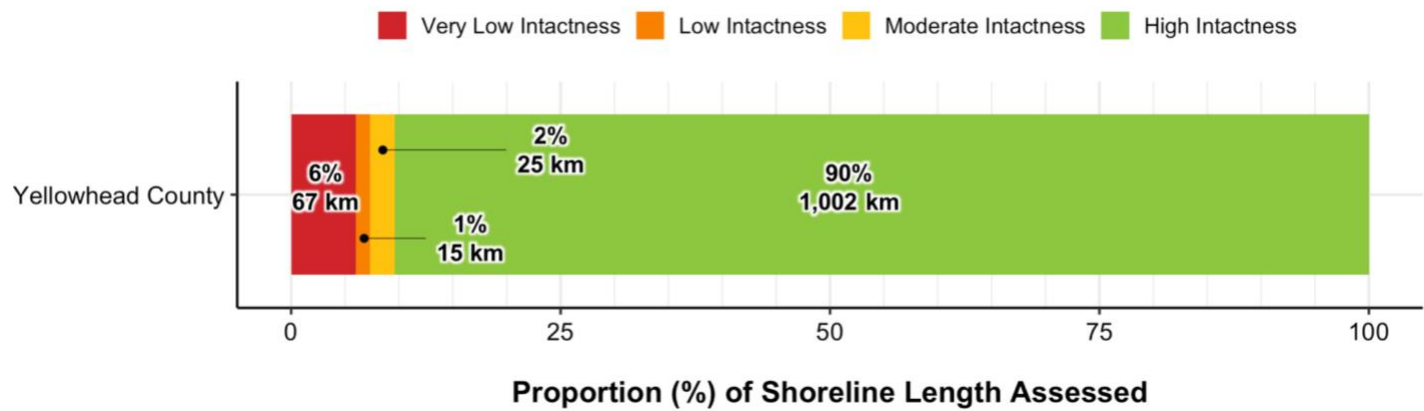
1.3. Land Cover¹



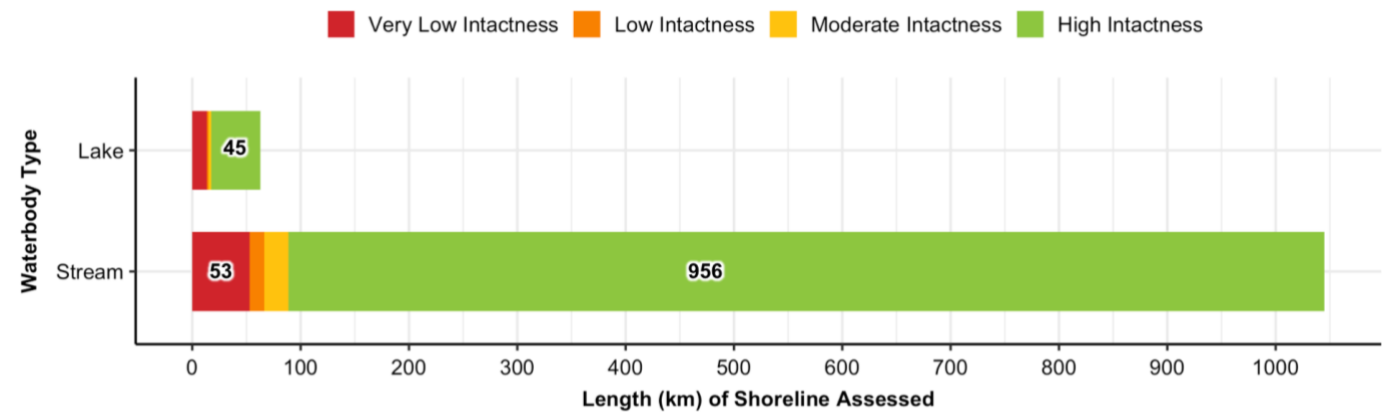
NOTE¹: A 6 m resolution wall to wall land cover only exists for the Brazeau River, Upper Pembina, and Mid Pembina HUC 6 watersheds. The wall to wall land cover was used to assess intactness and pressure for selected waterbodies within these HUC 6 watersheds.

1.4. Riparian Management Area Intactness

Overall Municipal Intactness

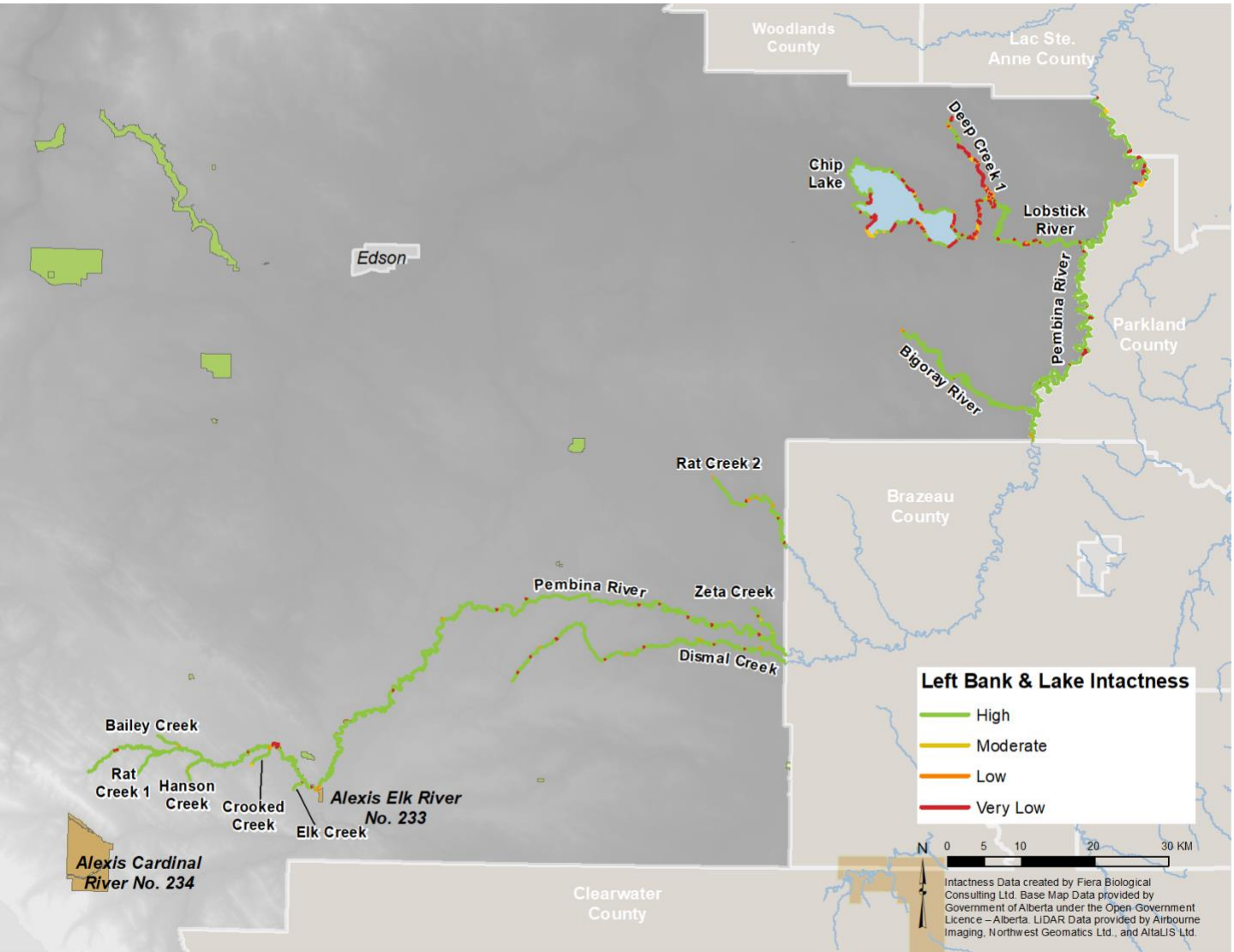


Intactness By Waterbody Type

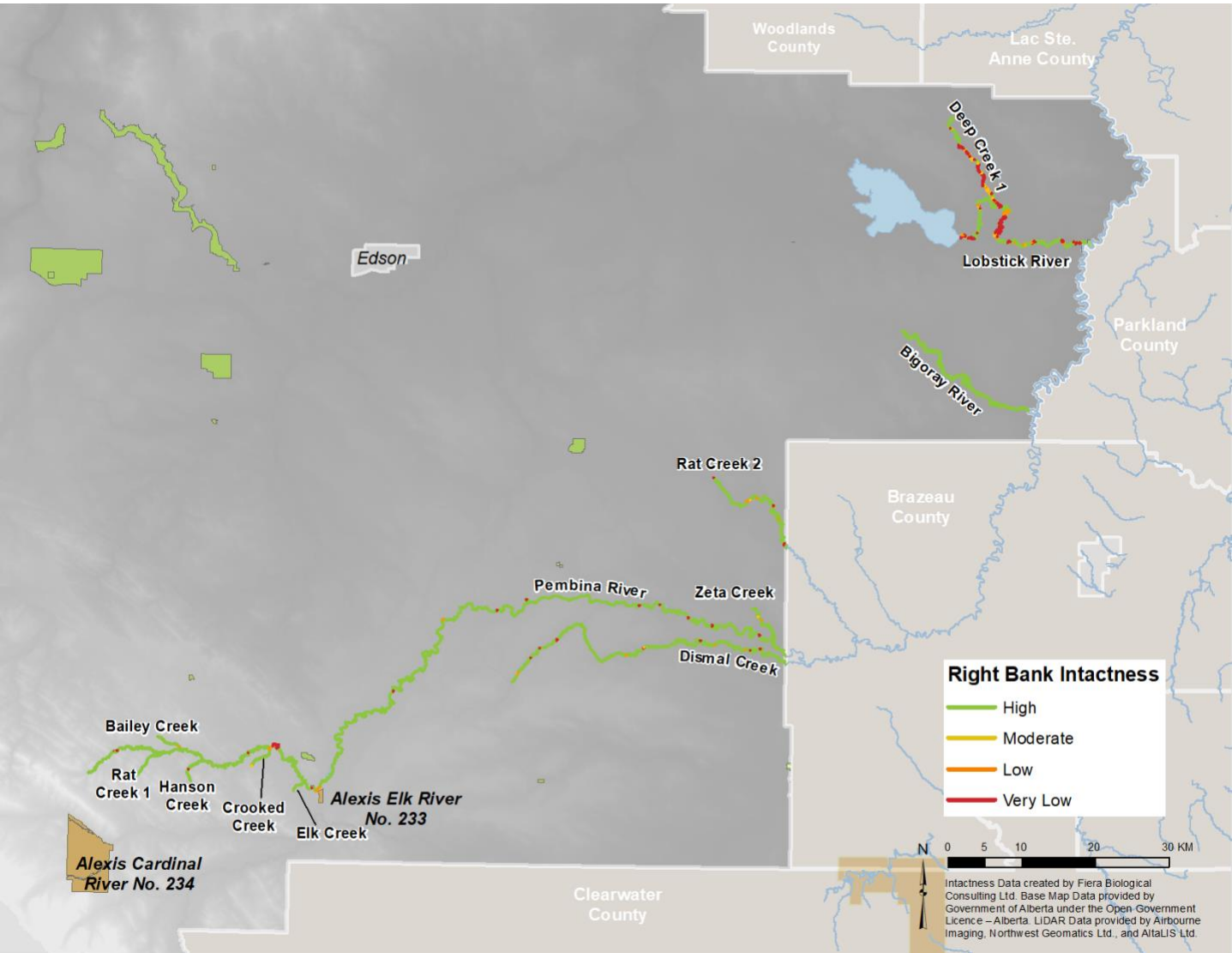


NOTE: Numbers indicate the total length (km) of shoreline associated with each intactness category. Categories with no label contain <25 km of shoreline.

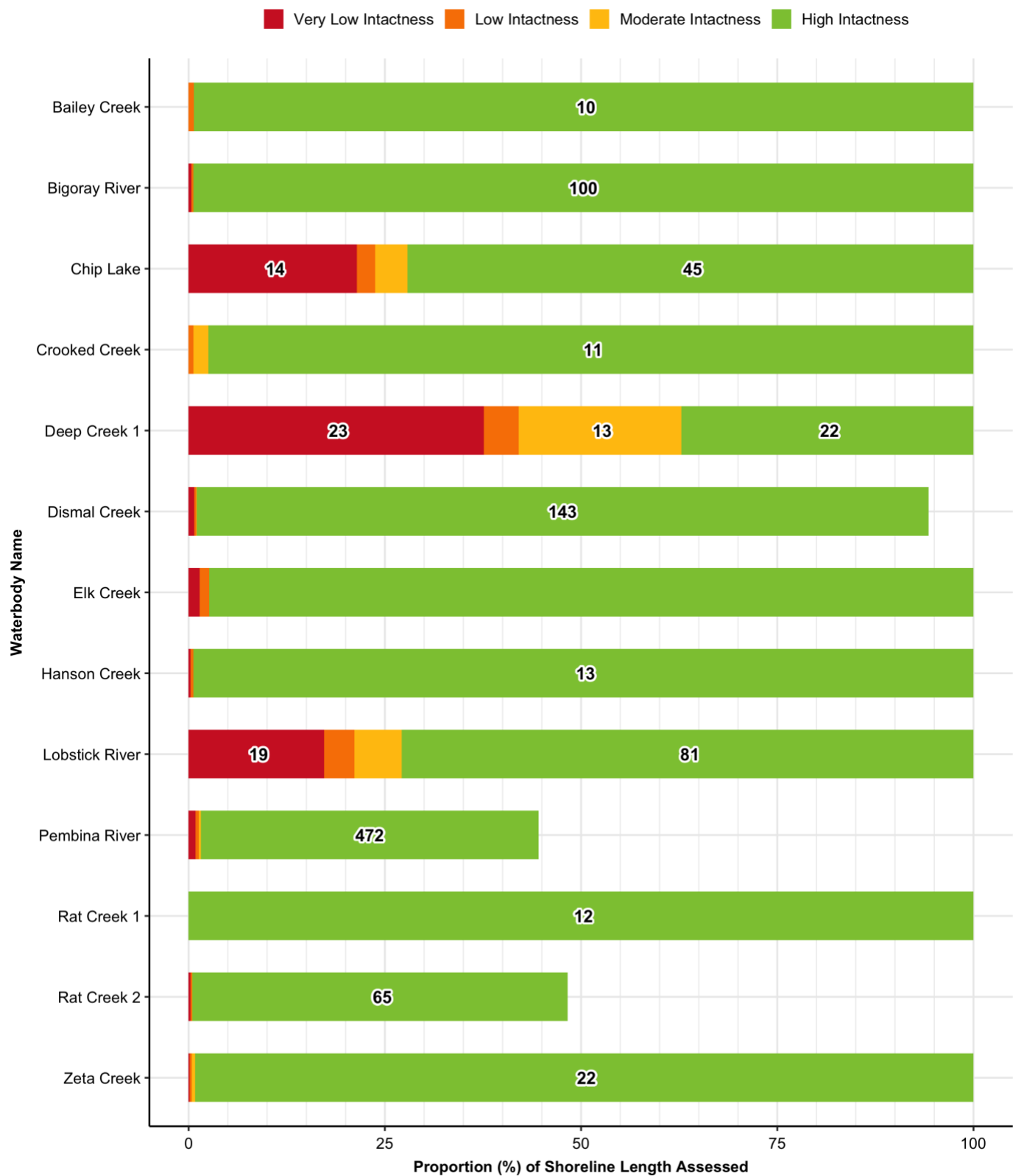
Intactness – Left Bank and Lakes



Intactness – Right Bank



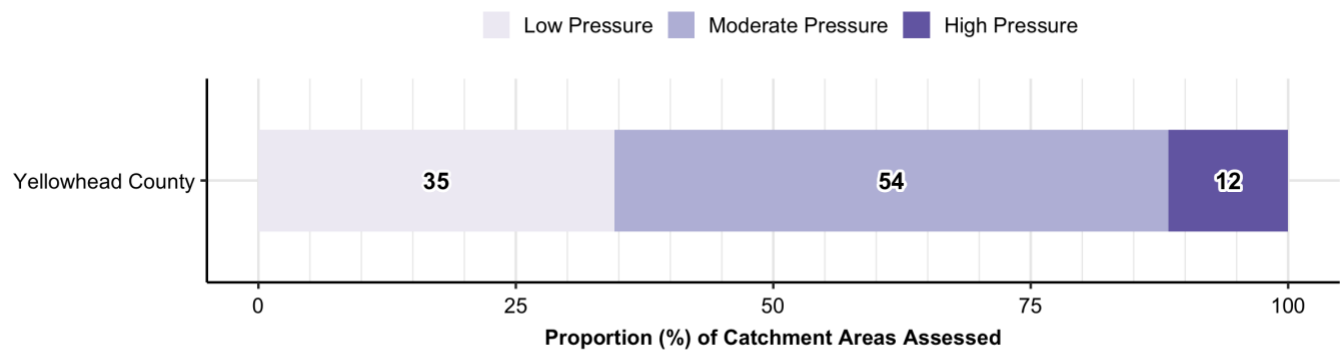
Intactness – All Waterbodies



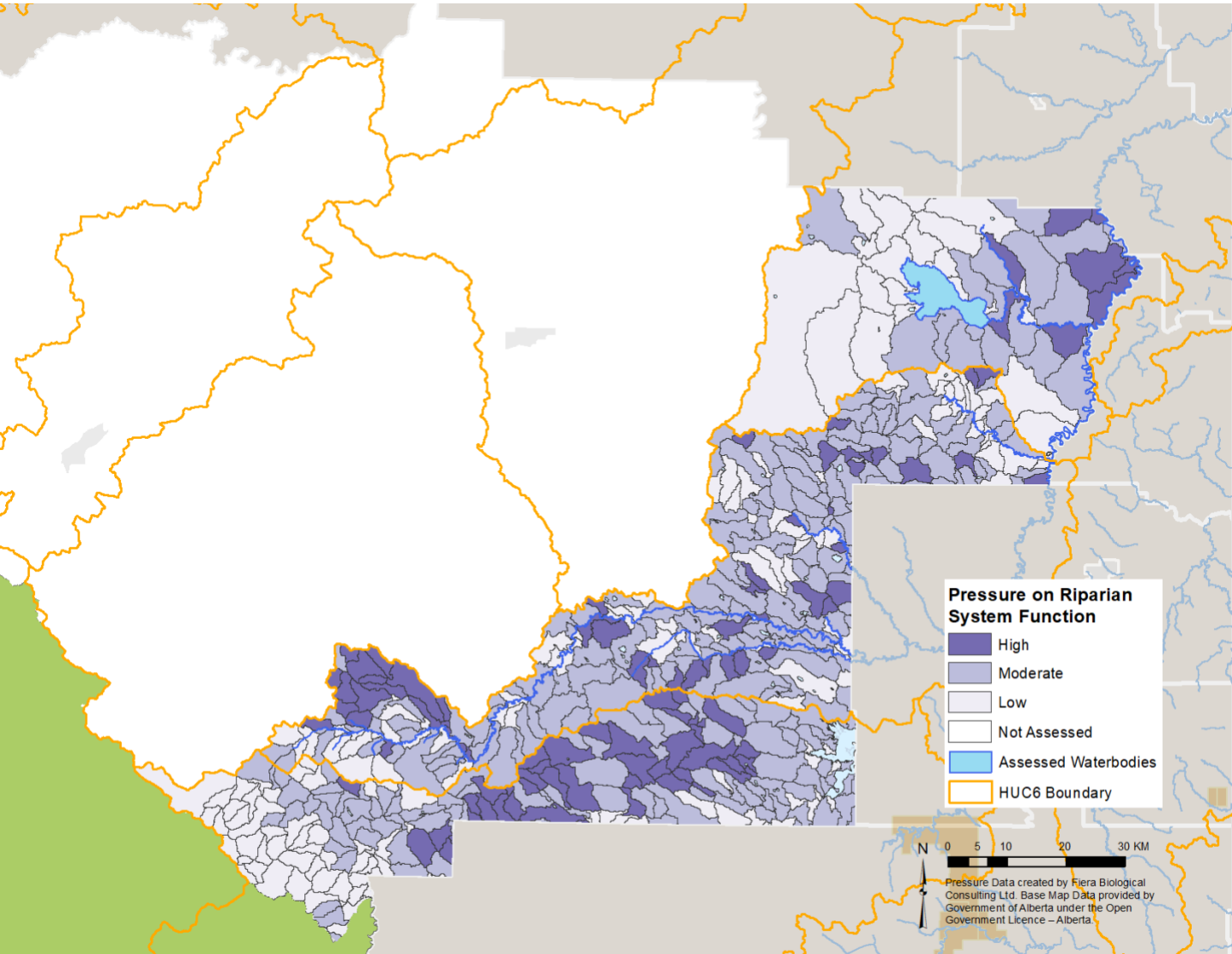
NOTE: Numbers indicate the total length (km) of shoreline associated with each intactness category. Categories with no label contain <10 km of shoreline.

1.5. Pressure on Riparian System Function

Overall Municipal Pressure

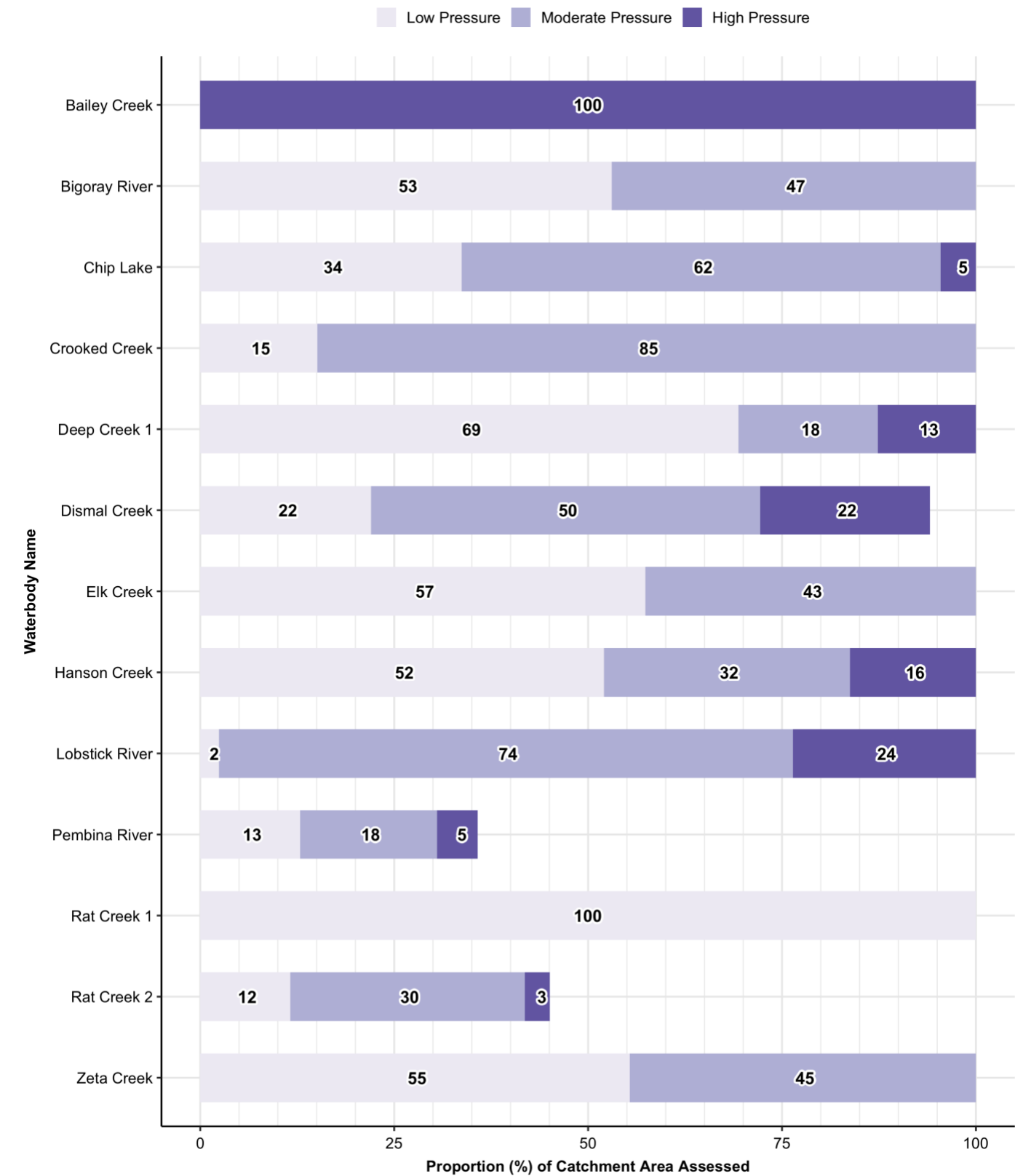


NOTE: Numbers indicate the proportion (%) of shoreline associated with each pressure category.



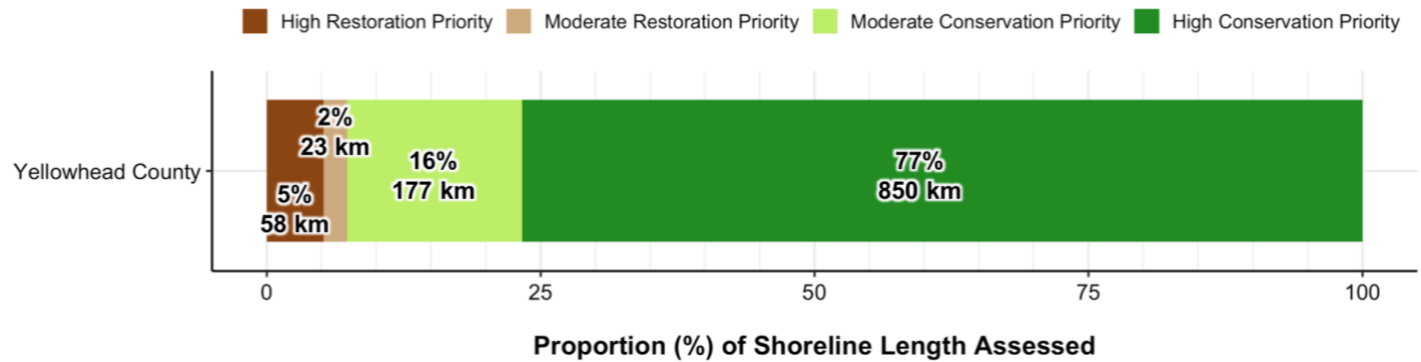
NOTE: Pressure can only be assessed for catchment areas that have a complete wall-to-wall land cover.

Pressure – All Waterbodies

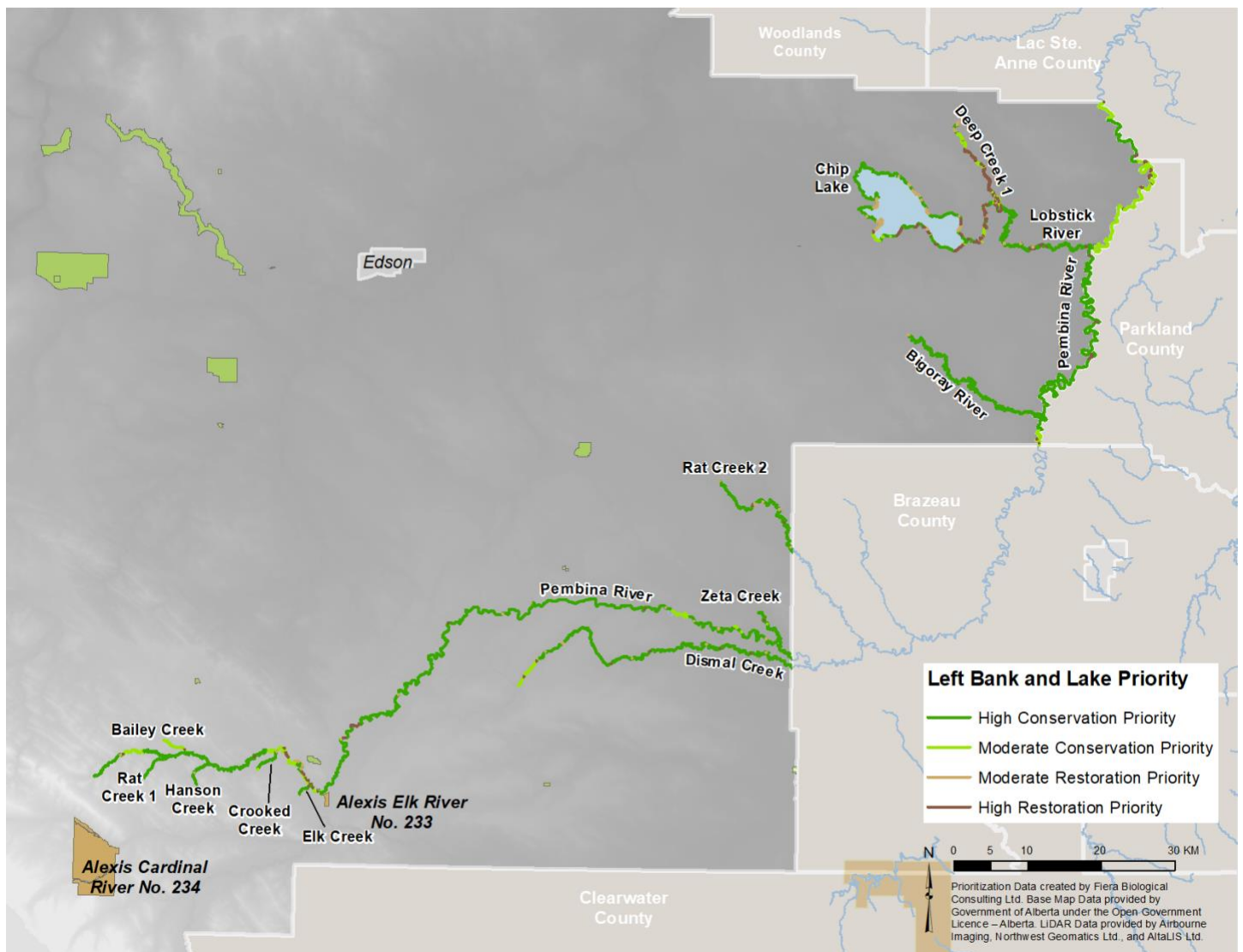


1.6. Conservation & Restoration Priority

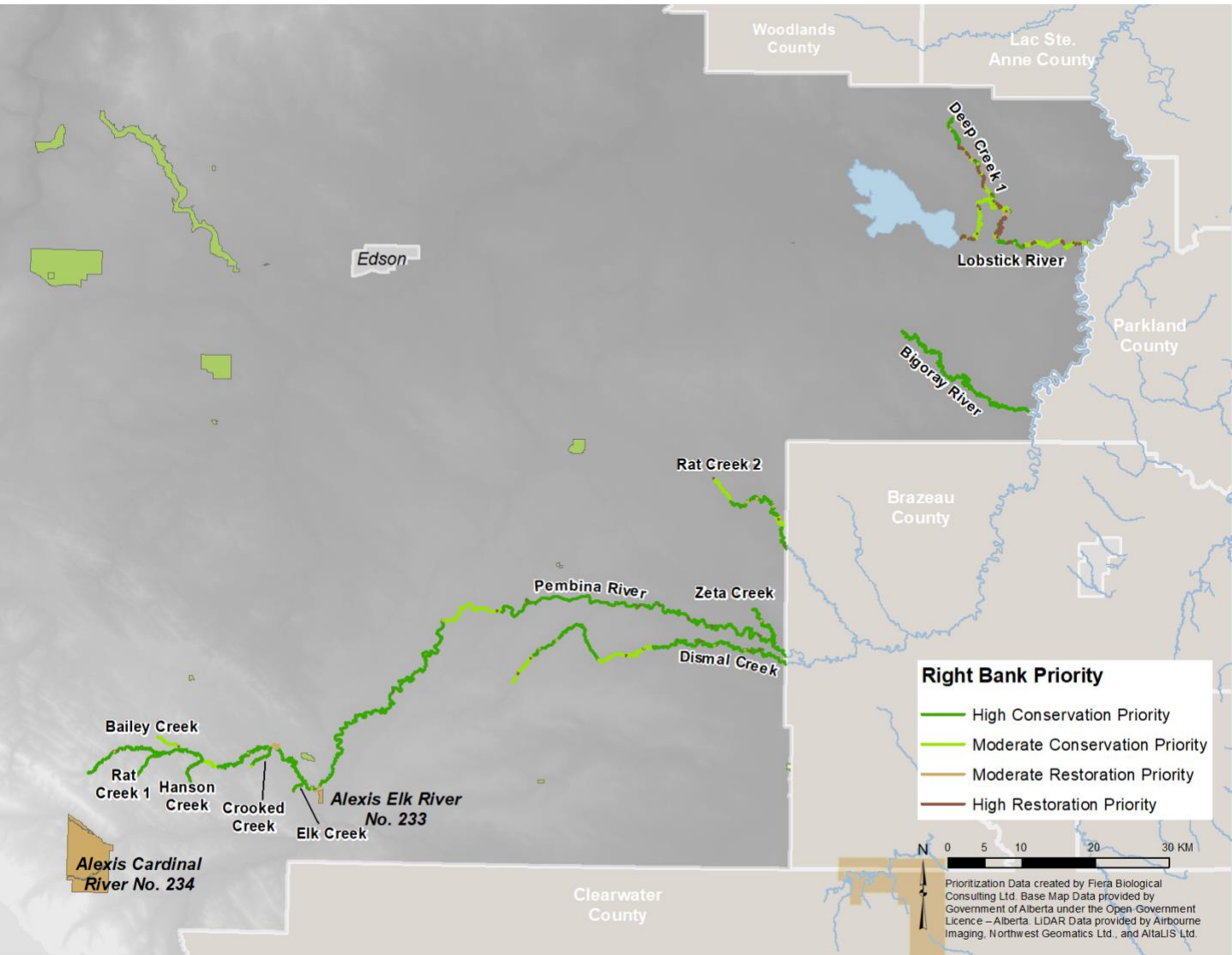
Overall Municipal Conservation & Restoration Priority



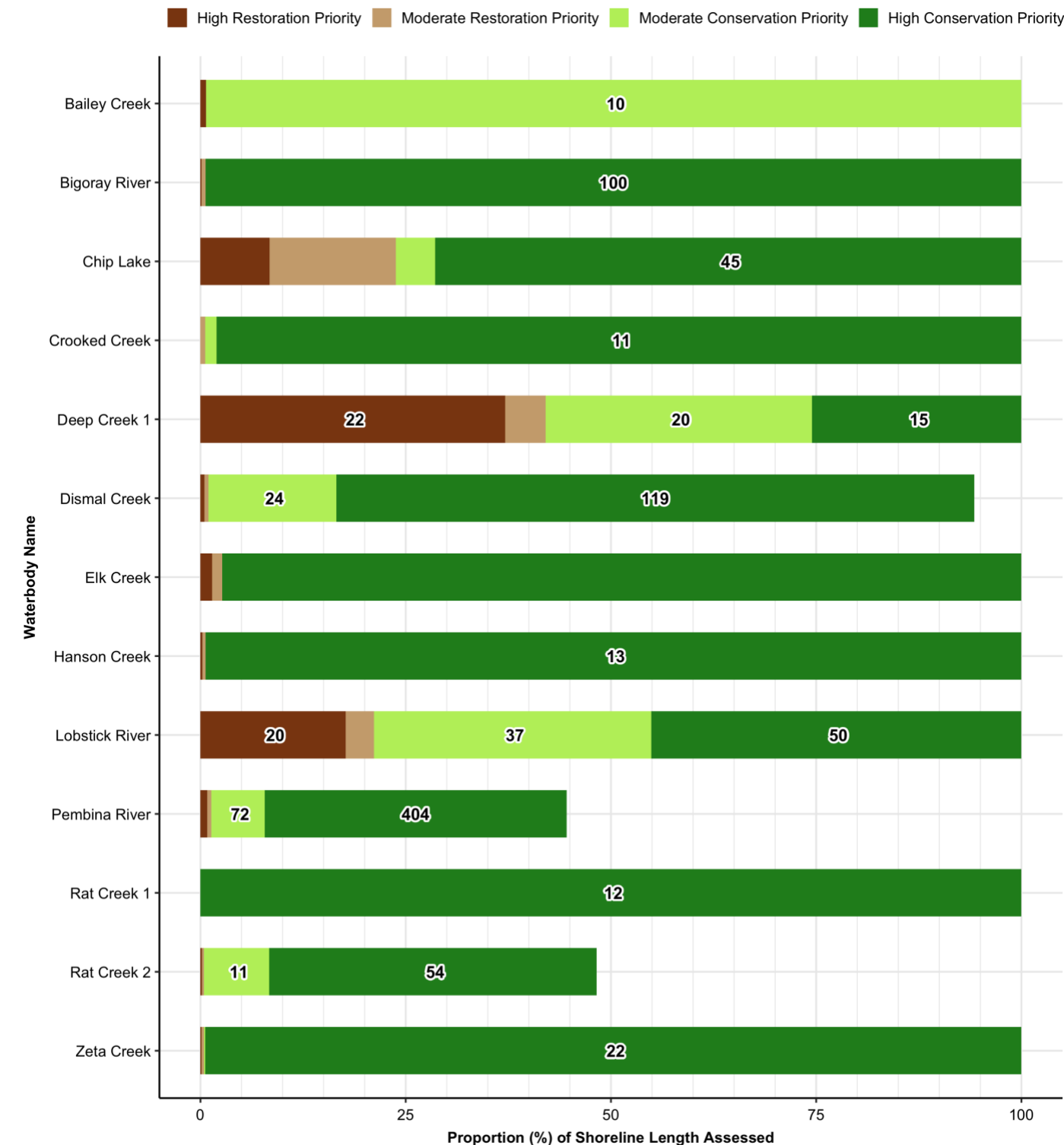
Conservation & Restoration Priority – Left Bank and Lakes



Conservation & Restoration Priority – Right Bank



Conservation & Restoration Priority – All Waterbodies



NOTE: Numbers indicate the total length (km) of shoreline associated with each prioritization category. Categories with no label contain <10 km of shoreline.